



EPiC user guide

1 EPiC Home

Click here to go to the EPiC homepage – you will find an overview of all data themes here.

2 Education

Click here to go to the He Ako Hiringa homepage, where you'll find a range of free educational resources to complement the EPiC data stories.

3 Problem of practice

Here we name a problem of practice and give some context around how the data can be used to help resolve it.

4 National data

This tab contains the data stories with national level data populating the charts.

5 Data story

These are the individual data stories within the overall theme. They display aspects of data relevant to the overall problem of practice.

6 Context-setting content box

This content sets the scene for the data and explains why these data are displayed.

7 Your Patients data display

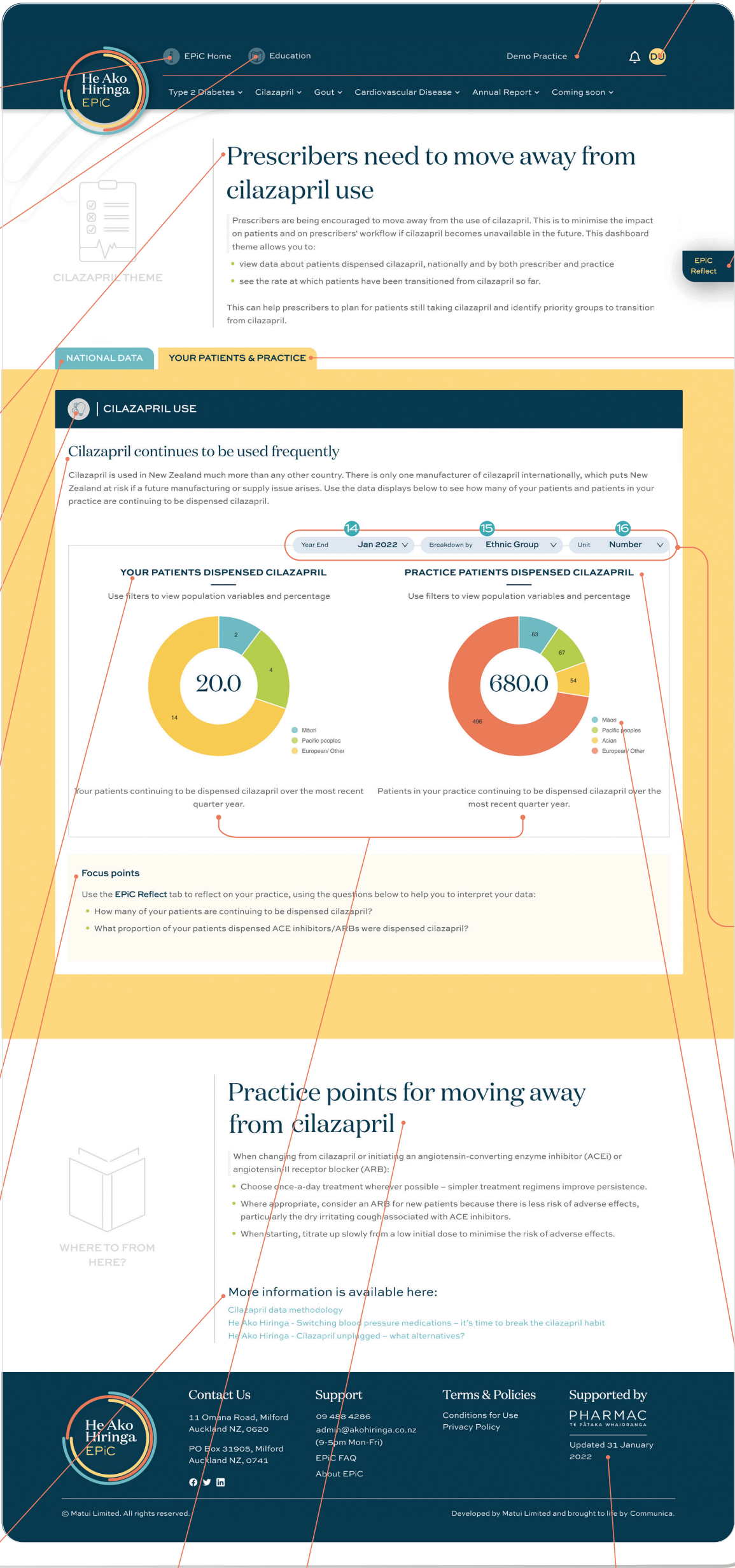
This shows data about your patients. Your patients are anyone who has had a medicine dispensed from a prescription you have provided in any setting.

8 Focus points

These questions can help you to interpret your data and assist you to gain key messages from the data.

9 More information

Links to additional information on He Ako Hiringa including methodology and related education resources are provided here.



19 Chart description

This gives a more detailed description of data displayed in the chart above.

20 Where to from here

This provides additional information, such as practice points, tips to help achieve equity, and ideas for quality improvement.

21 Data updated

The dashboards include data up to this date.

10 You

Click your initials and select “My Profile” to view your account details. You can also log out from here.

11 Assigned practice

This is the practice assigned to you determined by the number of prescriptions you provided – if this is not the practice you expected, please contact us.

12 EPiC Reflect

EPiC Reflect prompts you to delve into the prescribing data, reflect on your current practice and develop quality improvement initiatives with your team. Each EPiC Reflect activity is populated with examples and endorsed by the RNZCGP for CME. Simply download and save the editable PDF, complete the activity, then upload to your CPD record. Look for the “EPiC Reflect” icon to the right side of your screen.

13 Your data

This tab contains the data stories with your data and your practice data populating the charts.

ACTION

14 Date filter

This shows the period ending with the date shown. Select older time periods to compare trends over time.

ACTION

15 “Breakdown by” filter

This filters data by different demographics. Select ethnicity, age, gender or socioeconomic deprivation quintiles to compare data within these demographic groups.

ACTION

16 Unit filter

This filters data by absolute number of patients and by percentage of population. Select percentage in this filter to allow easier comparison between different demographic groups – the percentage within each demographic group is displayed.

17 Your Practice data display

This shows data about patients enrolled at your practice. The prescriptions can be provided by any prescriber including those not working in that practice (eg, specialists, after-hours healthcare settings).

18 Filter key

This colour-coded key illustrates the different “breakdown by” filters.

Explore your prescribing data now at epic.akohiringa.co.nz